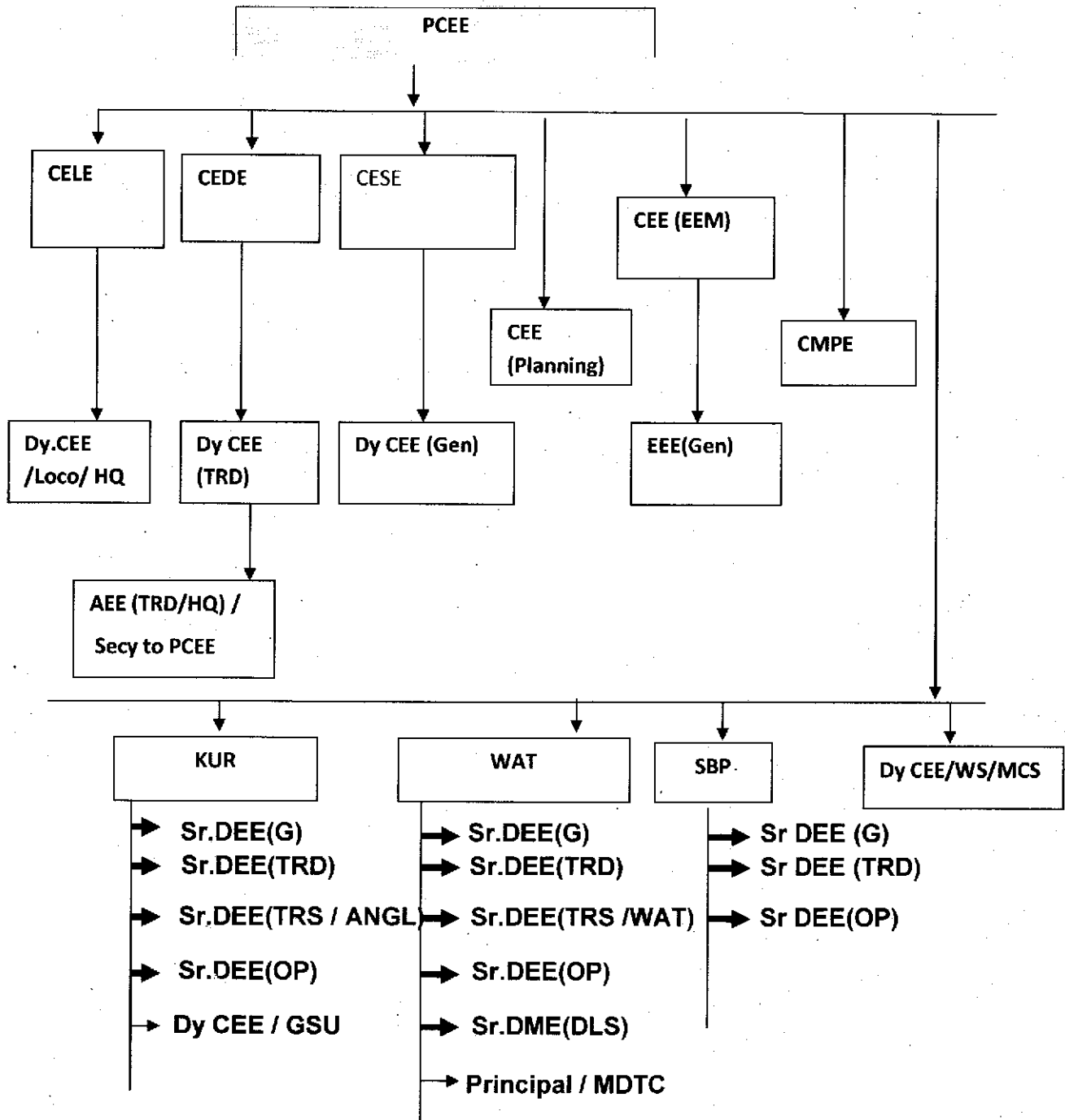


ORGANIZATION CHART:

Gazette Organization of Electrical Department. / ECoR



CUG details of Electrical Department / HQ / ECoR (As on 01.04.2024)

S.No.	Name of the employee	Designation	Rly Phone (Office)	Rly Phone (Res)	CUG No.	BSNL (Office)	BSNL (Residence)	Fax
1	Sri Alok Sahay	PCEE	50040	50041	8455885300	2303515	2302233	2302524
2	S. Bhattacyarya	CELE		50541	8455885301	2301745	2300066	
3	Dhaneswar Mohanta	CEDE	50240	50241	8455885302	2300372		
4	Suratha Jani	CEE/PLNG	50242		8455885278	2303875		
5	Rasika Singh	CEE/EEM	50440		8455881300	2303524		
6	P.K.Bhanja	DyCEE/Loco	50042		8455885307	2303473		
7	Somanath Sahoo	Dy CEE/TRD			8455885309			
8	Kaleswar Bhagat	DyCEE(G)			8455885308			
9	P.K.Tripathy	EEE(G)			8455885311			
10	Japani Behera	Secy to PCEE	50144		8455885305			
11	P Venugopala Rao	PS-I	50048	54049	8455885310			
12	R C S RAO	Sr Clerk	51942	54245	8455880312			
13	Kumunda Ch Rauta	Sr.Clerk	51844	54249	8455885347			
14	Kruti Deepa	Sr Clerk	51148	54247	8455885349			
15	Pralina Muduli	Jr.Clerk	51548		8455885321			
16	B S Mishra	PS-II		54243	8455885335			
17	Suryamani Nayak	PS-II			8455881983			
18	B N Murmu	Steno-I			8455885336			
19	S B Barala	Steno-I	50242		8455885338			
20	A Swain	Steno-I		54743	8455885339			
21	Girish Ch Sahu	Steno-I		52755	8455881290			
22	S.K.Parida	Steno-I		51041	8455885315			
23	Kalandi Charan Sahoo	SSE	51242		8455885326			
24	Banmali Sahoo	SSE			8455885317			
25	G Lakra	SSE			8455885323			
26	R N Das	SSE	51348		8455885324			
27	CK Subudhi	SSE			8455885325			
28	M R Mohapatra	SSE	51748	52341	8455885327			
29	S K Barik	SSE	51742		8455885329			
30	A K Sutar	SSE	51746		8455885330			
31	G K Jena	SSE	51246		8455885331			
32	C R Swain	SSE			8455885332			
33	Bhanja Behera	SSE			8455885342			
34	H Lakra	SSE		54447	8455887023			
35	Kajari Bose	SSE			8455887024			
36	B K Mallik	SSE	51544		8455885346			
37	P K Tripathy	SSE	51146		8455885348			
38	S B Satpathy	SSE	51248		8455880311			
39	U K Sethi	SSE	51542		8455885345			
40	ESK Patro	SSE	51842		8455880313			
41	A M G Rao	SSE	51848		8455880317			
42	Kailash Chandra Sahoo	SSE	51343		8455880315			
43	Upama Kanti Naik	SSE	51642		8455880316			
44	Pankaj Kumar Bhounik	SSE			8455885344			

45	Bighneswar Swain	JE		54345	8455885322			
46	Ranjan Kumar Sahoo	JE			8455885328			
47	Sangeeta Mishra	JE	51442		8455885340			
48	Shanti Swaroop Behera	JE			8455880319			
49	Barun Pradhan	JE			8455880320			
50	Sushobhan Mallick	JE			8455880321			
51	Manas Kumar sahuo	JE			8455880314			
52	S. K. Behera	JE			8455885320			
53	K P Kanungo	CLI	51144		8455885316			
54	AK Lenka	CLI	51648		8455885318			
55	Babin Ku Dash	CLI		54348	8455887025			
56	P.K.Mohanty	CLI	51342		8455885319			
57	Srimanta Kumar Panda	CLI			8455880318			
58	S N Gouda	CLI	51944		8455890333			
59	Nishakar Samal	CLI	51948		8455891325			
60	M R Swain	CLI			8455881320			
61	B.N. Behera	CLI			8455888351			
62	Pravat Kumar Mohanty	CLI			8455888357			
63	Devendra NAG	MV Driver-III			8455885306			
64	Mikan Parida	GA(Elect.)			8455885337			
65	Ch. Sairam	GA(Elect.)		54649	8455888315			
66	S.K. Biswas	GA(Elect.)			8455888316			
67	M. Madhusudan	GA(Elect.)			8455888319			
68	Santosh Kumar Gouda	GA(Elect.)			8455888354			
69	Tirupathi Pradhan	GA(Elect.)			8455888326			
70	M Anil	Tech-I	51644	53147	8455885343			
71	D.S.Prusti	Tech-I	53444		8455885341			
72	Purushottam Behera	Tech-I			8455888335			
73	P.K. Samal	Tech-I			8455888336			
74	S S Panda	TADK			8455888378			
75	Arjit Beura	TADK			8455888356			
76	Control Room				8455885333	2303113		
77	Electrical Break down	rail sadan	50444					
78	Electrical Break down	rail kunj	51444					
79	SSEE	RAIL SADAN	53444					
80	CONTROL ROOM	TLC	51345					

EAST COAST RAILWAY

DISTRIBUTION OF FUNCTIONS OF ELECTRICAL OFFICERS AT HEAD QUARTERS

- 1.0 At present, Principal Chief Electrical Engineer (PCEE) is assisted by the following Senior Administrative Grade Officers who are responsible to CEE for proper working of Department.

- (i) Chief Electrical Loco Engineer [CELE]
- (ii) Chief Electrical Distribution Engineer [CEDE]
- (iii) Chief Electrical Services Engineer [CESE]
- (iv) Chief Electrical Engineer / Planning [CEE(plg)]
- (v) Chief Electrical Engineer / EEM [CEE(EEM)]

1.1 GENERAL ADMINISTRATION ITEMS:

At present, Principal Chief Electrical Engineer is assisted by the following Senior Administrative Grade Officers who are responsible to PCEE for proper working of Department.

- 1.1.1 Nodal Officer (for electrical brief) for General Manager's MCDO to CRB, safety MCDO.
- 1.1.2 Co-ordination for Electric Standards Committee Meeting, Principal Chief Electrical Engineer's Conference and Principal Officers Meeting etc.
- 1.1.3 Nodal Officer for preparation and compilation of Annual Narrative and Administrative report.
- 1.1.4 Nodal Officer for Compliance of CRB, Members & GM's Inspection Reports.
- 1.1.5 Nodal Officer for awards at MR, GM & PCEE's level.
- 1.1.6 Nodal Officer for Computerization & MIS works.
- 1.1.7 Nodal Officer for Schedule of Power.
- 1.1.8 Co-ordination with Railway Recruitment Board.

1.2 CHIEF ELECTRICAL LOCO ENGINEER (CELE):

He will look after the following works:

- 1.2.1 All executive and technical works pertaining to repair and maintenance of electric loco and proper functioning of Electric Loco Shed, Waltair & Angul.
- 1.2.2 All executive and technical works pertaining to Repair & Maintenance of MEMUs.
- 1.2.3 Monitoring of sanctioned works relating to Electric Loco Shed, Waltair and Angul.
- 1.2.4 Co-ordination with Workshops regarding POH of Electric Locos.

- 1.2.5 Co-ordination with RDSO & CLW for approved sources related to loco maintenance and spares.
- 1.2.6 Liaison with RDSO for maintenance problems & improvements. Liaison with CLW. Liaison with Workshops (KPA, KGP etc.) for Special Repairs to Electric Locos and modification.
- 1.2.7 Standardization, co-ordination with Stores Department, Procurement of Stores, Control over expenditure related to Electric Locos.
- 1.2.8 Implementation of development trial and modernization schemes pertaining to Electric Loco.
- 1.2.9 Co-ordination with Finance & Personnel Department creation/extension/sanction of posts pertaining to Electric Loco. Establishment matters including training of staff.
- 1.2.10 Works Programme, Machinery & Plant Programme and Rolling Stock Programme for Electric Loco Sheds and locomotive items, including Estimate and Procurement, Planning, Monitoring and Progress of Sanctioned Works.
- 1.2.11 Nodal officer for Maintenance Study Group (MSG) on Loco Operation and Maintenance.
- 1.2.12 Safety, Punctuality, Investigation and remedial action to prevent unusual occurrence and Engine failures on line.
- 1.2.13 All technical & executive works related to efficient operation/utilization of Electric Locos, MEMUs and perspective planning.
- 1.2.14 Updating of Statistical data and failure analysis of Loco/MEMU failures to improve reliability.
- 1.2.15 Co-ordination with Stores Department for procurement of spares and other items for Electric Loco Operation, MEMU operation.
- 1.2.16 Co-ordination with CLW, RDSO, CSO, and COM for issues related to Loco/MEMU Operation and Safety.
- 1.2.17 Co-ordination with Finance & Personnel Department for creation/Extension/Sanction of posts pertaining to Loco/MEMU Operation. Establishment matters including Training of Running Staff.
- 1.2.18 Electric Loco Simulator Project.
- 1.2.19 Nodal Officer for Punctuality, Safety, Performance Review Meeting of Locos/MEMU.
- 1.2.20 Nodal Officer for Speed Certification for any kind of Rolling Stock and matters relating to Commissioner of Railway Staff.
- 1.2.21 Co-ordination for implementation of Railway Safety Review Committee's

Recommendations.

- 1.2.22 Nodal Officer for Special Railway Safety Fund (SRSF).
- 1.2.23 Nodal Officer for Loco Running Staff & Crew Lobbies.
- 1.2.24 Nodal Officer to deal with the Statistical Department.
- 1.2.25 Member of Safety Audit Committee.
- 1.2.26 He will analyze the loco failures including stalling on monthly basis and advise Divisions about remedial action.

1.3 CHIEF ELECTRICAL DISTRIBUTION ENGINEER (CEDE):

He will look after the following works:

- 1.3.1 All executive & technical works pertaining to maintenance and operation of 25 KV AC Traction Distribution System.
- 1.3.2 Co-ordination with RDSO, Railway Electrification, State Electricity Boards and Electricity Regulatory Commissions regarding Traction Distribution related works.
- 1.3.3 Co-ordination with all other Departments for vetting and technical scrutiny of Works Programme, Machinery & Plant Programme and out of turn proposals for works pertaining to Traction Distribution. Monitoring of works and providing necessary support for sanctioned Traction Distribution. Works being executed by the Division/Construction.
- 1.3.4 Standardization, Co-ordination and Procurement of Stores Control over expenditure pertaining to Traction Distribution Units.
- 1.3.5 Implementation of development trial and modernization schemes pertaining to Traction Distribution.
- 1.3.6 Co-ordination with Finance and Personnel Department for creation/extension/sanction of posts pertaining to Traction Distribution Unit. Establishment matter including training Traction Distribution staff.
- 1.3.7 Liaison with Operating Department for Maintenance Blocks.
- 1.3.8 Operation, Planning & Day to day maintenance of Tower Wagons. Major Repair and POH of Tower Wagons.
- 1.3.9 Nodal Officer for all Railway Electrification, Allahabad.
- 1.3.10 Nodal Officer for processing of EIG Sanction & Approval for Traction Distribution Works.
- 1.3.11 Monitor the items of Maintenance Study Group (MSG), Traction Distribution

meeting.

- 1.3.12 Co-ordination with all Divisions/Workshops, other Departments and in matters relating to Survey, Planning, Estimation of Works.
- 1.3.13 Nodal Officer for works Programme, Machinery & Plant Programme, Rolling Stock Programme and Co-ordination with Chief Engineer (Planning), Chief Mechanical Engineer(Planning) for progress of work.
- 1.3.14 Nodal Officer to co-ordinate with Chief Security Commissioner regarding theft cases of all Electrical Units.
- 1.3.15 Budget Officer for Electrical Department.
- 1.3.16 Planning, Co-ordination, Monitoring and progress of all sanctioned ongoing projects.
- 1.3.17 Co-ordination with Stores Department for Procurement of Stores of Electrical (Construction) units.
- 1.3.18 Contractual and Financial Management of the projects.
- 1.3.19 All Technical and Executive Works related to efficient completion of the projects.
- 1.3.20 Co-ordination with all Departments/Divisions in matters related to technical, Planning, Estimation of Works, Scrutiny of Detailed Estimates, Revised Estimates, Material Modifications etc.
- 1.3.21 Planning of works (including Electrification) over East Coast Railway to improve the operational efficiency.
- 1.3.22 Look after the work of Chief Electrical Loco Engineer (CELE)/Chief Electrical Engineer (CEE / EEM or CEE-plg)) in his absence.
- 1.3.23 He will be Nodal Officer for Energy Management.
- 1.3.24 Nodal Officer for Scrap Disposal.
- 1.3.25 He will analyze the asset failures on monthly basis and advise divisions for remedial measure.
- 1.3.26 He will be responsible for analysis of penalties being paid TSS-wise for energy bill and advise divisions for remedial action.

1.4 CHIEF ELECTRICAL SERVICE ENGINEER (CESE)

He will look after the following works:

- 1.4.1 All executive and technical works pertaining to General Power supply, Stationary Installations, Diesel Generator, Electrical Pumps, Refrigeration & Air-conditioning Equipment in the Office Building and other Power Supply Installations oat

Workshop/Sheds.

- 1.4.2 Co-ordination with all Departments for vetting and technical scrutiny of the Works Programme, Machinery & Plant Programme, and out of turn proposals for works pertaining to power supply, planning, co-ordination, monitoring and progress of all sanctioned works.
- 1.4.3 Co-ordination with Stores Department for procurement of Stores for Power Supply works.
- 1.4.4 Compilation for database regarding maintenance & operation of power supply.
- 1.4.5 Co-ordination with Finance & Personnel Department for creation/extension/sanction of posts pertaining to power supply, establishment matters including training of staff.
- 1.4.6 Co-ordination with RDSO, Government Organization, such as CPWD, Lift Inspectors and Fire Department related to Power Supply maintenance.
- 1.4.7 Investigation/periodical review of Water supply arrangement with Engineering Department.
- 1.4.8 EIG sanction & approval relating to non-traction areas of Railway.
- 1.4.9 All executive & technical works relating to the maintenance, POH, repair and upkeep of coaching stocks, including liaison with RDSO, ICF, RCF Other Railways and Railway Board.
- 1.4.10 Technical control of POH and other activities of Workshop related to coaching. Maintenance liaison with Mechanical Department out turn from Workshops.
- 1.4.11 Standardization, co-ordination and procurement of Stores. Implementation of development trial and modernization schemes pertaining to coaching stock. Control over expenditures related to coaching stock.
- 1.4.12 Estimate, sanction, procurement of items pertaining to machinery and plant programme, rolling stock programme for coaching services.
- 1.4.13 Scrutiny of works programme, machinery and plant programme, rolling stock programme, budget proposals of divisions pertaining to coaching census.
- 1.4.14 Co-ordination with Finance and Personnel Department for creation/extension/sanction of posts pertaining to maintenance of coaching stock, training of staff.
- 1.4.15 Monitoring of all sanctioned works related to coaching complex.
- 1.4.16 He will be the nodal officer for Man Power Planning, Bench Marking and Non-Gazetted cadre. Establishment matters including training of staff of coaching units.
- 1.4.17 Maintain database for analyzing failure of items, pertaining to coaching stock.

- 1.4.18 Nodal officer for energy conservation and liaison with State Electricity Board and Tariff Regulatory Commission, regarding electricity tariff for general services.
- 1.4.19 Nodal Officer for fire safety works in stationary applications and for fire, safety in coaches.
- 1.4.20 Nodal Officer for passenger amenities, ZRUCC, PNM & PREM. To attend all meetings related to coaching services. Member of Standing Action Committee for Passenger Amenities.
- 1.4.21 Nodal Officer for Training Schools and act as Training Manager for Electrical Department.
- 1.4.22 Nodal Officer for Training Schools and act as Training Manager for Electrical Department.
- 1.4.23 Nodal Officer for Parliament Questions, Public Accounts Committee, references from VIPs and Public Complaints.
- 1.4.24 Nodal Officer for special letters from Audit, Audit Paras, Audit Inspection Notes, Accounts Inspection Notes, Performance Review and PNM and PREM.
- 1.4.25 Nodal Officer for Disaster Management.
- 1.4.26 He will put up analysis of equipment failures of TL & AC to CEE on monthly basis.
- 1.4.27 He will put up analysis of penalty in energy bill of divisions and Workshops, substation wise to CEE and take remedial measures.
- 1.4.28 He will follow up reliability action plan implementation by divisions & Workshops.
- 1.4.29 Look after the work of Chief Electrical Distribution Engineer (CEDE) in his absence.

1.5 CHIEF ELECTRICAL ENGINEER /PLANNING:

- 1.5.01 In charge of Train lighting and Air conditioning of coaches
- 1.5.02 All Store matters related to TL & AC.
- 1.5.03 Work Store matters related to TL & AC.
- 1.5.04 Public complaints related TL & AC
- 1.5.05 Office Stores and other matters of Headquarters.
- 1.5.06 In-Charge for EMU-& MEMU.
- 1.5.07 Audit, Court cases, Arbitration, Parliament Question, MCDO, PCDO.
- 1.5.08 PNM, PREM, ZRUCC.
- 1.5.09 PAC, VIP references, Compliance of GM/Member/CRB Inspection Notes.

- 1.5.10 Budget.
- 1.5.11 In-Charge of CEE/Secretariat works.
- 1.5.12 Rajbhasha

1.6 **CHIEF ELECTRICAL ENGINEER(EEM) (CEE/EEM)**

- 1.6.01 Power line crossing and Electrical Safety.
- 1.6.02 Public Complaints.
- 1.6.03 EIG sanction for non traction installations.
- 1.6.04 Energy conservation, green energy including solar, wind etc.
- 1.6.05 PAT, all matters related to energy conservation and energy efficiency.
- 1.6.06 In-charge for planning matters including works Programme, M&P and RSP.
- 1.6.07 Monitoring of different Plan Head works.
- 1.6.08 All Non-gazetted staff matters, Gazetted matters & Establishment.
- 1.6.09 Training Manager of Electrical Department.

❖ **Public Information Officer:**

Particulars	Appellate Authority (AA)	Public Information Officer (PIO)	Asst. Public Information Officer (APIO)
Name	Dhaneswar Mohanta	Somanath Sahu	P. K. Bhanja
Designation	CEDE	DyCEE(TRD)	Dy CEE (Loco)
Land phone (Rly)	(085) – 50240	(085)-50146	(085) - 50042
Mobile No.	8455885302	8455885309	8455885307
Email address	cedeecor@gmail.com	dyceetrd@gmail.com	dyceeloco@gmail.com

❖ **SALIENT FEATURES (As on 31.03.2024)**

1. TRAIN LIGHTING & AIR CONDITIONING: (As on 31.03.2024)

Sl. No	Particular	PUI	BBS	SBP	WAT	Total
1	No. of TL coaches in services	709	332	243	765	2049
2	No. of AC coaches in service	597	428	68	562	1655
3	No. of Exp rakes maintenance at depot	44	23	10	42	119
4	No. of passenger trains/rakes maintenance at depot	1	0	8	6	15

2. GENERAL POWER SUPPLY & SERVICES

(a) Assets of General Power & Services (As on 31.03.2024)

Sl.No	Particulars	KUR	SBP	WAT	MCS	Total
1	No. of stations electrified as per guidelines	136	67	114	--	317
2	No. of stations provided with water coolers as per guidelines	22	16	13	--	51
3	No. of water coolers provided at stations	56	27	35	--	118
4	No. of DG set Provided	38	91	156	7	292
5	No. of Sub stations	71	35	80	11	197

(b). Scale Of Lighting In Station & Platform:

T-5, CFLs and Metal Halide type of fittings have been used to illuminate the station platforms, Station Approach and various passenger services related areas like Concourse, Waiting hall, Retiring Room & Booking office etc. The average illumination level provided in different category of stations is as follows:

Station Category	Platform (PF)	
	Covered PF	Open PF
NSG1, NSG2, NSG3	150 Lux.	50 Lux
NSG4, SG1, SG2, SG3	100 Lux	30 Lux
NSG5, NSG6	100 Lux	30 Lux

(c). Fannage Provision In Station Platform:

- One row of fans has been provided in Platforms where Platform width is between 6 to 9 Mtrs.
- Two rows of fans have been provided in Platforms where platform width is more than 9 Mtrs.

(d). Provision Of Water Coolers In Station:

Water Coolers have been provided at all stations which deal with an average of 1000 Passengers (Inward & Outward) or more per day and where piped water supply and electricity is available. NSG1 to NSG5 2nos water cooler in each P.F.

(e). Illumination Of Manned Level Crossing Gates:

All manned and cabin operated level crossing gates are required to be provided with adequate light in both side of the track. 100% of manned and cabin operated L/C gates have been electrified and provided illumination during nighttime. The work, on electrification of remaining manned and cabin operated L/C gates are under different stages of execution.

3. TRACTION DISTRIBUTION

(a). Assets of AC Traction Distribution

Sl.No.	Particulars	KUR	WAT	SBP	Total
1	Electrified Route KM	1164.829	1106.00	772.44	3043.269
2	Electrified Track KM	3279.165	2656.145	1926.976	7862.286
3	No. of traction sub-stations(TSS)	20	28	14	62

All the lines of East Coast Railway have been electrified with AC 25000 volts. Before introduction of 25 KV AC traction, the following notifications/warning to road users is being given by Railways.

I. Public Notification

"Notice is hereby given to all users of Railway lines and premises situated on the completed section of the under- noted section of the East Coast Railway that the 25000 Volt, 50 Hz., AC overhead traction wires will be energized on or after the date specified against the section. On and from the same date the overhead traction line shall be treated as live at all times and no unauthorized person shall approach or work in the proximity of the said overhead line".

II. Warning to Road users

"It is notified for information of the Public that in connection with introduction of 25 kV ac electric traction over the section of the East Coast Railway, height gauges have been erected at all the level crossings with clear height 4.78 m above road level with a view to prevent loads of excessive height from coming into contact or dangerous proximity to live traction wire (contact wire), which shall be at a height of minimum 5.5m above the rail level at level crossings. Public are hereby notified to observe the height specified above for the purpose of loading vehicles and to see that the loads carried in road vehicles do not infringe the height gauges under any circumstances".

The dangers of a load of excessive height are as follows: -

- Danger to the height gauge and consequent obstruction to the road as well as the railway line.
- Danger to the materials or equipment carried or the vehicle itself.
- Danger of fire and risk of life due to contact with or dangerous proximity to the conductors.

III. Public Caution Board's regarding "High voltage/25000 volts" have been provided in Station Premises, Waiting halls, Foot over bridges etc.

(b) Electrical Supply to ECoR.

For running of trains in Electric traction in ECoR, Power Supply are taken from AP, Odisha and Chhatisgarh State. There are 12 TSSs under DISCOMs of AP, 42 TSS under DISCOMs of Odisha and 8 TSS under DISCOMs of Chhatisgarh.

4. LOCO SHEDS:

There are 2 Electric Loco Sheds, one at VSKP and another at Angul. ECoR has one diesel Loco sheds at VSKP.

(a) Electric Loco Holding as on 31.03.2024

Shed	Type of Electric loco with population						Total
	WAP7	WAG5	WAG6	WAG7	WAG9	WAG9H/HC	
VSKP	61	55	2	-	-	205	323
ANGUL	-	-	-	190	86	-	276
DLS / VSKP	-	-	-	-	-	225	225
Total	61	55	2	190	86	430	824

(b) Diesel Loco Holding as on 31.03.2024

Shed	WDG3A	WDG4	WDG4D	WDS6	Total
DLS / VSKP	43	39	82	8	172

5. Electric Loco Operation:

The Kottavalasa-Kirandul section, popularly known as K-K line, is having very arduous terrain with gradients up to 1 in 60, at a stretch as long as up to 70 KM and with number of reverse sharp curves up to 8 degrees. There are 1271 bridges and 58 tunnels in this section. The highest point in the broad gauge is situated at an altitude of 997.6 Mts at Similiguada station. Three WAG-5/WAG-7 locos in a consist or two WAG-9 loco in multiple are utilized to work the loaded trains.

ECoR maintains a territorial outage of about 1000 goods locomotives & about 140 coaching locomotives.