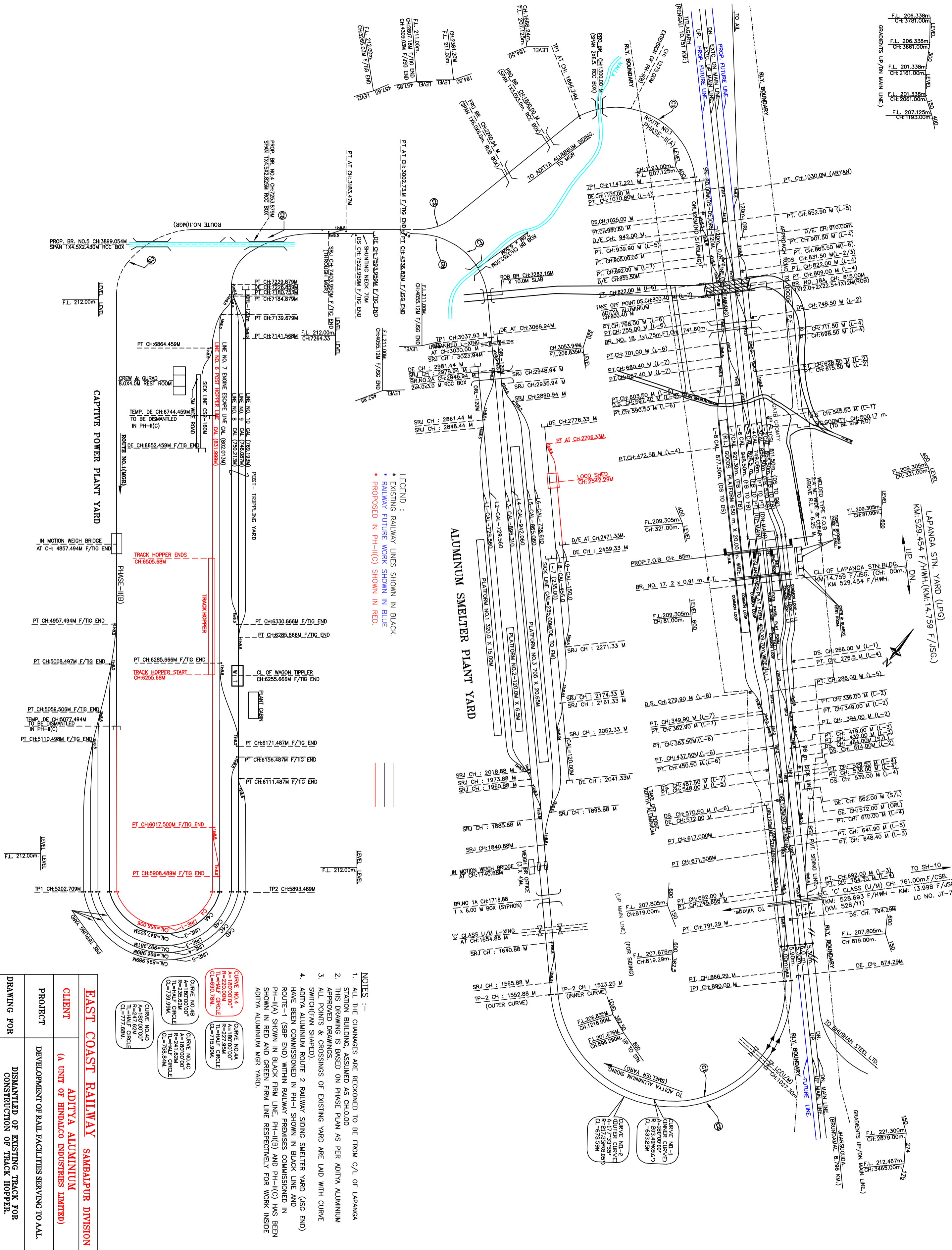


LEVEL 300  
 F.L. 206.338m  
 CH: 3781.00m  
 F.L. 206.338m  
 CH: 3661.00m  
 F.L. 201.338m  
 CH: 2167.00m  
 F.L. 201.338m  
 CH: 2061.00m  
 F.L. 207.125m  
 CH: 1193.00m

LEVEL 500  
 F.L. 209.305m  
 CH: 321.00m  
 F.L. 209.305m  
 CH: 321.00m  
 F.L. 209.305m  
 CH: 321.00m

LEVEL 125  
 F.L. 221.300m  
 CH: 2879.00m  
 F.L. 212.467m  
 CH: 3465.00m



LEGEND:  
 \* EXISTING RAILWAY LINES SHOWN IN BLACK.  
 \* RAILWAY FUTURE WORK SHOWN IN BLUE.  
 \* PROPOSED IN PH-II(C) SHOWN IN RED.

- NOTES :-
1. ALL THE CHAINAGES ARE RECKONED TO BE FROM C/L OF LAPANGA STATION BUILDING, ASSUMED AS CH=0.00
  2. THIS DRAWING IS BASED ON PHASE PLAN AS PER ADITYA ALUMINIUM APPROVED DRAWINGS.
  3. ALL POINTS & CROSSINGS OF EXISTING YARD ARE LAID WITH CURVE SWITCH(FRM SHAPED).
  4. ADITYA ALUMINIUM ROUTE-2 RAILWAY SIDING SMELTER YARD (SSE END) HAVE BEEN COMMISSIONED IN PH-I SHOWN IN BLACK LINE AND ROUTE-1 (SBP END) WITHIN RAILWAY PREMISES COMMISSIONED IN PH-II(A) SHOWN IN BLACK FIRM LINE, PH-II(B) AND PH-II(C) HAS BEEN SHOWN IN RED AND GREEN FIRM LINE RESPECTIVELY FOR WORK INSIDE ADITYA ALUMINIUM MGR YARD.

CURVE NO.4 A=180°00'00" R=247.52M TL=HALF CIRCLE CL=690.78M	CURVE NO.4A A=180°00'00" R=247.52M TL=HALF CIRCLE CL=777.68M
CURVE NO.4B A=180°00'00" R=235.62M TL=HALF CIRCLE CL=758.84M	CURVE NO.4C A=180°00'00" R=235.62M TL=HALF CIRCLE CL=758.84M

<b>EAST COAST RAILWAY SAMBALPUR DIVISION</b>	
<b>CLIENT</b>	<b>ADITYA ALUMINIUM</b> (A UNIT OF HINDALCO INDUSTRIES LIMITED)
<b>PROJECT</b>	DEVELOPMENT OF RAIL FACILITIES SERVING TO AAL.
<b>DRAWING FOR</b>	DISMANTLED OF EXISTING TRACK FOR CONSTRUCTION OF TRACK HOPPER.
<b>CONSULTANTS</b>	<b>RCC (INPRA) CONSULTANTS PVT LTD.</b> 63, SIDDHESH APT., 1 & 4 FLOOR, S.E. RAILWAY LAYOUT-4 RAVAMPATANA, BANGUR, NGPUR-440022. PH. NO. 0712 - 2289898, e-mail: rccinptra.cs@rediffmail.com DRG. NO. BCP/AA/Track Plan/01 SER. NO. 1 OF 1
<b>SCALE -</b>	NOT TO SCALE
<b>DATE :</b>	MARCH-2019

**M/s Hindalco Industries Ltd.(A Unit of Aditya Aluminium), Lapanga**

<b>Sl.No.</b>	<b>Description</b>		
1	Notification for opening of siding	COMML. C/NO. 134(G)/2013 DT. 06.12.2013	
	Owner Party	M/S Hindalco Industries Ltd (Unit-Aditya Aluminium) Lapanga	
	Status as premier customer	NA	
	Siding Co-used by	CONR(Container Corporation of India)	
2	Alpha code of siding	MAAL	
3	Numerical Code	12221473	
4	Type of Siding	Private Siding	
5	Serving Station	Lapanga	
6	Chargeable distance from Serving Station	03.15 KM (BTAP- MAAL SIDING),9.19KM (Coal Yard)	
7	Siding agreement status	Valid	
8	No. of Commercial staff sanctioned	05	
9	Earnings in Rs. (April-21 to March-22)	Rs.27,06,72,440/-	
10	Traffic (April-21 to March-22) No. of rakes	<b>O/W</b>	<b>I/W</b>
		177	854
11	Production Capacity	30000 MT	
12	Rail Coefficient	80%	
13	Placement Capacity	<b>O/W</b>	<b>I/W</b>
		59 BOXN/BOBRN	59 BOXN/BOBRN
14	Loading/Unloading lines	Loading-2/ Unloading-05	
15	No. of lines in exchange yard	07	
16	Loco utilized for PL/Removal	No	
17	Working Hours	Round the clock	
18	Free Time	<b>Loading</b>	<b>Unloading</b>
		BOXN-03Hrs.	BOXN-05 Hrs. BOBRN-02 Hrs.
19	Additional Free Time Allowed	Fly Ash Loading/Tarpouline Covering-01:00 hr	
20	Average Detention (PL to RL) (April-21 to March-22)	Loading- 03:49	
		Unloading-06:36	
21	Handling of Rakes (Mechanized/Manual)	Mechanized	
22	TMS	Available	
23	E-Payment status	Available	
24	Weigh Bridge	03 Available	
25	Contact Number of CGS/CNC	09090671476	
26	Customer's Name & Contact Number	Sri Sunil Verma, AGM Logistics Contact-7992543078	
27	Any other relevant information:	LWIS-BTAP Transaction Ex-MUAT to MAAL & CONT-O/W Transaction	