

East Coast Railway  
**(Engineering Department)**

Office of the Chief Engineer  
Annexe(East) Bldg., Rail Vihar,  
CSP/Bhubaneswar-23

CE's CIRCULAR No.16

Sub :-Type Plan for Retiring Rooms/Officers Rest House Suites.


During various inspections, it has been noticed that careful planning is not going into designing the layout of Retiring Rooms and furniture are also not being procured suiting the plan. As a result, we do not get user satisfaction even after spending money.

It is possible to plan and design a Retiring Room that would afford satisfaction to the user at no additional cost. Please find enclosed herewith CE's Drawing No.159/01/05 & No.159/02/05 as indicated below :

- a) CE's Drawing No. 159/01/05 indicates general layout including furniture layout plan of Retiring Room.
- b) CE's Drawing No. 159/02/05 indicates ergonomic dimensions of furniture and other fixtures.

All future planning for construction of new Retiring Rooms/remodeling of existing Retiring Rooms should be based on the enclosed C.E's drawings as far as feasible.

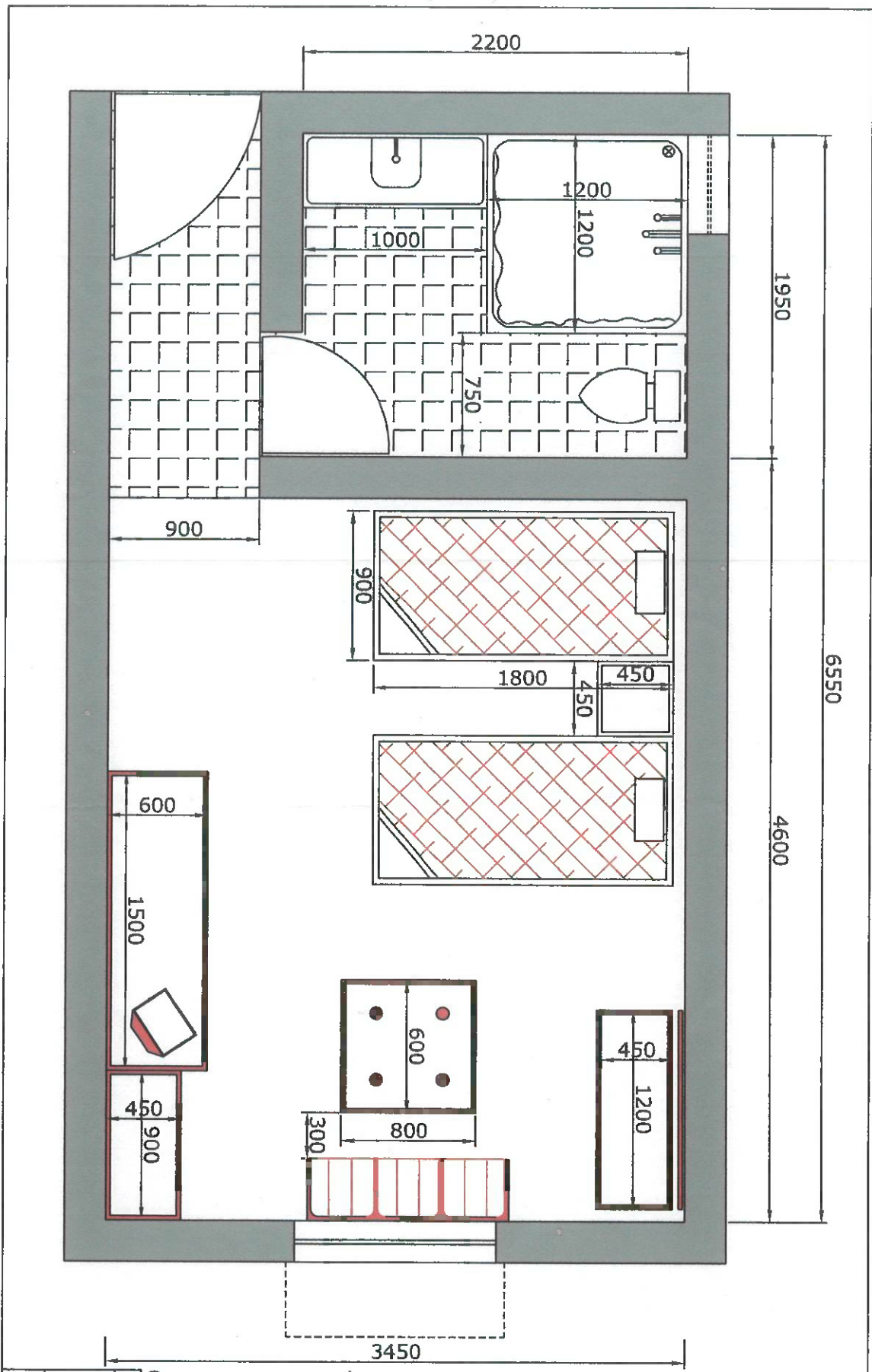
Encl : CE's Drawing i) No.159/01/05  
ii) No.159/02/05

  
 7.4.05  
 (K.Gangopadhyay)  
 Chief Engineer  
 o/c  
 2005  
 Dated : April 7, 2004

No.W.2/118/CE's circulars(Works)/Pt.I/ 3038

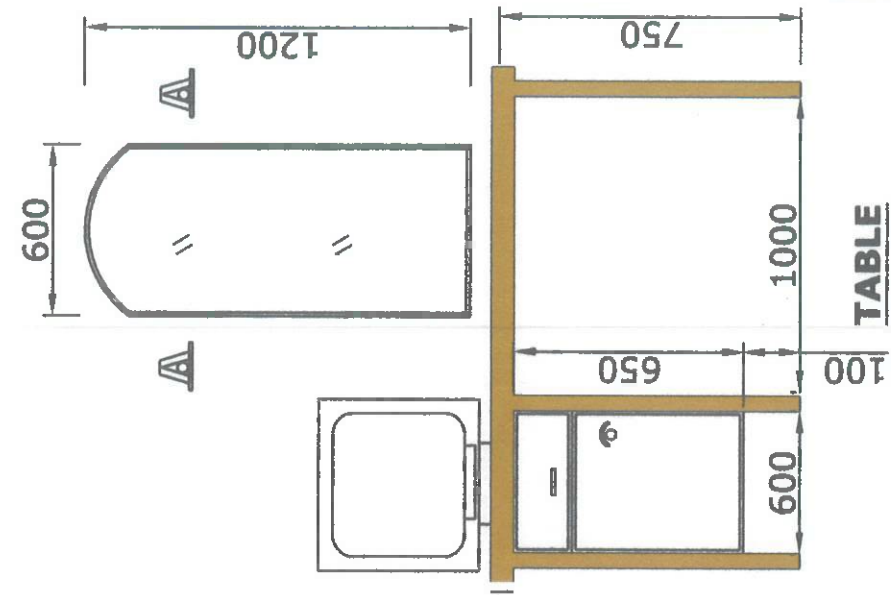
Distribution :

1. Divisional Rly.Manger, E.Co.Rly/KUR, SBP, WAT.
2. CAO(Con)/ECoR/BBS.
3. CTE, CBE, CGE/ECoR/BBS.
4. Sr.DEN(Co)/ECoR/KUR, SBP, WAT.
5. Dy.CE/TP, TR, BR, Proj, Genl/ECoR/BBS
6. Secretary to GM for kind information of GM

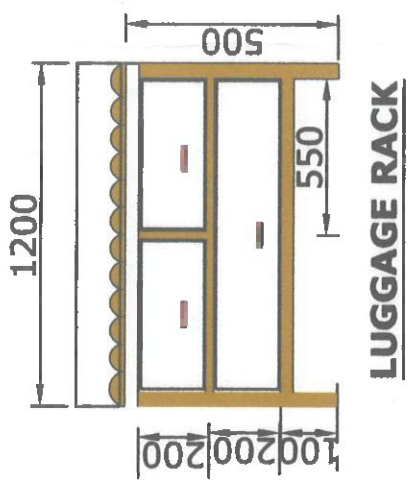


CE's Drg No. - 159/01/05  
East Coast Railway, BBS  
Type Plan for Retiring  
Room/Officers'  
Rest House Suits  
All measurements are in mm.

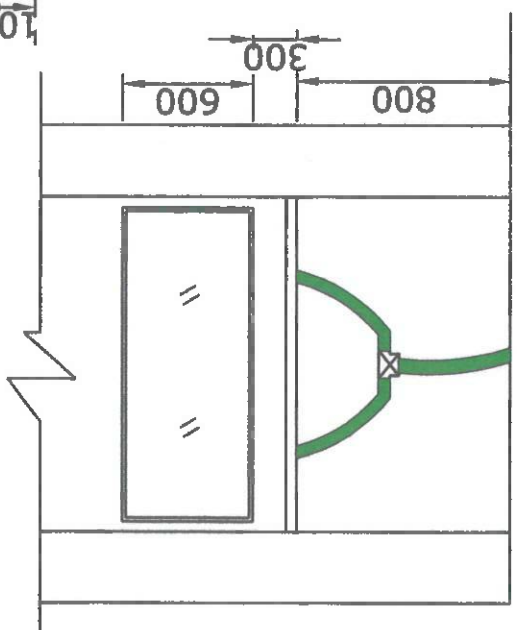
CE's Drg No. -159/02/05  
 East Coast Railway, BBS  
 Details of furniture for  
 Retiring Room/Officer's  
 Rest House Suits  
 All measurements are in mm.



**TABLE**



**LUGGAGE RACK**



**WASH BASIN**